

## New and Exciting Lyme Disease Research

By Lyn Hanshew, M.D.

Some of the most ill people I have tried to help have been diagnosed with Lyme disease. Conventionally, the diagnostic and treatment options are not good. The difficulties with long-term antibiotic protocols include the expense, lack of insurance coverage, side-effects, potential for development of antibiotic resistance and lack of studies demonstrating efficacy. If you or someone you know suffers from it, you are all too aware of these facts.



After years of research I now present what I believe to be the most effective solution offered today.

**Continued on page 2**

### In This Issue

New and Exciting Lyme Disease Research..... 2

Results RNA  
1 888 823 3869  
[www.resultsrna.com](http://www.resultsrna.com)

# New and Exciting Lyme Disease Research

by Lyn Hanshew, M.D.

Some of the most ill people I have tried to help have been diagnosed with Lyme disease. Conventionally, the diagnostic and treatment options are not good. Serological testing has been disappointing and confusing.

The difficulties with long-term antibiotic protocols include the expense, lack of insurance coverage, side-effects, potential for development of resistance and lack of studies demonstrating efficacy.

Countless people needlessly suffer from Lyme disease. After years of research I now present what I believe to be the most effective solution offered today.

## Profound Research

Due to the obvious and desperate need for an effective anti-Borrelia agent and that Advanced Cellular Silver (ACS) 200 by Results RNA® in previous studies has been proven to be a safe and effective anti-bacterial, anti-viral and anti-fungal agent, the following independent studies were conducted.

Independent studies generated the following kill-time data using ACS 200 against *Borrelia burgdorferi*, the etiological agent of Lyme disease. The kill-time studies used loss of motility of the spirochetes as the kill criteria as observed via dark field microscopy. It is important to know that the *Borrelia burgdorferi* kill-time protocol used for this test was originated by Dr. William Burgdorfer.

## **Borrelia burgdorferi baseline count:**

Mean number of motile organisms: 130/field. The estimated volume of 1 field is approximately  $3.4 \times 10^6$  ml. Therefore, the starting concentration of the *B. burgdorferi* culture was approximately  $3.8 \times 10^7$  organisms/ml.

ACS 200	
Time	No. motile organisms
1.5 min	17
4 min	1
6 min	1
8 min	0

PSS	
Time	No. motile organisms
1 min	11
4 min	10
6 min	3
8 min	10

Since a 1:10 dilution of the culture was performed in both the test and PSS control suspensions, the number of live organisms observed after 8 minutes in the PSS control was about 77% of that expected.

## Conclusion

After years of extensive research, ACS 200® has now been shown to achieve complete kill against *Borrelia Burgdorferi* in only 8 minutes. These test results represent a significant feat as the Lyme disease associated microorganism is extremely difficult to culture, test and kill.

Most of the *B. burgdorferi* motility ceased after about 4 minutes of exposure to the ACS 200® solution. No motility was observed after 8 minutes of exposure.

Dr. Burgdorfer described similar in vitro testing results using a colloidal silver preparation. He surmised that silver disables the enzyme(s) used by bacterial, fungal and viral agents for their oxygen metabolism causing them to suffocate upon contact. There have been reports of elimination of late-stage Lyme symptoms using colloidal silver preparations.

This data provides the scientific basis for using ACS 200® as an effective anti-Borrelia agent. In the clinical setting, many practitioners currently prescribe ACS 200® to their Lyme patients with excellent outcomes. Adding Advanced Cellular Zeolite (ACZ) nano® to reduce toxic body burden is a very powerful adjunct to the ACS 200® protocol. When taken together, these two products are highly effective in broad treatment.

## Clinical Results

"I have been using the ACS 200 for well over a year and find that I rely on taking it daily. I have the *Varestrongylus Klapowi* worm that Lyme and CFS patients suffer with and I take 2 ounces, 3 times a week, and it has helped to get the worm under control. I also take 5 sprays by mouth, 3 times daily. ACS 200 is such an important part of my wellness program that I carry a bottle in my purse. It is also great for sinus

infections, pink eye and ear infections. Make sure you hold the solution in your mouth for 3 to 5 minutes if you can. Lyme patients have severe dental problems and by holding each dose in your mouth, it helps our gums. I make sure I spray my mouth several times when out in public, especially the movie theater.” Linda H.

### Conclusion

After years of extensive research, ACS 200 has now been shown to achieve complete kill against *Borrelia burgdorferi* in only 8 minutes. These test results represent a significant feat as the Lyme disease associated microorganism is extremely difficult to culture, test and kill.

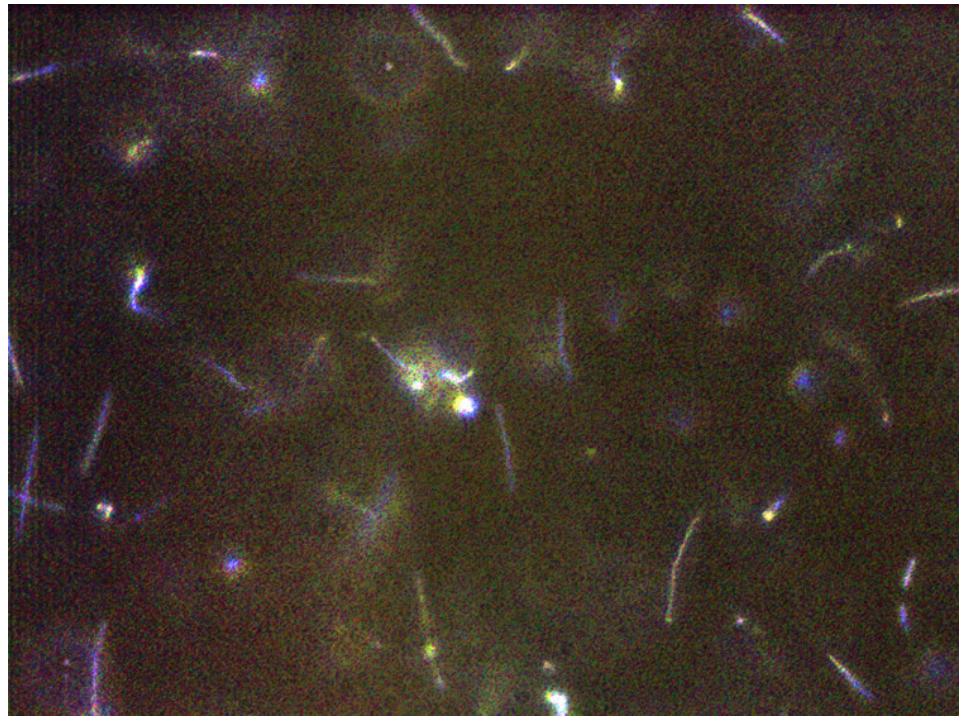
Most of the *Borrelia burgdorferi* motility ceased after about 4 minutes of exposure to the ACS 200 solution. No motility was observed after 8 minutes of exposure.

Dr. Burgdorfer described similar in vitro testing results using a silver preparation. He surmised that silver disables the enzyme(s) used by bacterial, fungal and viral agents for their oxygen metabolism causing them to suffocate upon contact. There have been reports of elimination of late-stage Lyme symptoms using ACS 200.

This data provides the scientific basis for using ACS 200 as an effective anti-*Borrelia* agent. In the clinical setting, many practitioners currently prescribe ACS 200 to their Lyme patients with excellent outcomes. Adding Advanced Cellular Zeolite (ACZ) nano to reduce toxic body burden is a very powerful adjunct to the ACS 200 protocol. When taken together, these two products are highly effective in broad treatment.

### How Do I Purchase These Products?

Results RNA® distributes their products through licensed, health care practitioners. If you are currently seeing



**Non-motile *Borrelia* via dark field microscopy**

an Integrative Medical Practitioner, I strongly urge you to recommend incorporating ACS 200 and ACZ nano into their clinical practice on your behalf. You may also contact Results RNA® directly and they will help you locate a prescribing practitioner in your area. Results RNA® products are also available from many clinic and natural pharmacy websites online.

### References

1. Burgdorfer, William. “From Penicillin to Mild Silver Protein-An Answer to Lyme Disease Without Antibiotics”. Rocky Mountain Laboratories, Division of N.I.H.
2. Cairns V, Godwin J (2005). “Post-Lyme borreliosis syndrome: a meta-analysis of reported symptoms”. *Int J Epidemiol* 34 (6): 1340–1345.
3. Singh SK, Girschick HJ (July 2004). “Lyme borreliosis: from infection to autoimmunity”. *Clin. Microbiol. Infect.* 10 (7): 598–614.
4. Stricker RB (July 2007). “Counterpoint: long-term antibiotic therapy improves persistent symptoms associated with Lyme disease”. *Clinical infectious diseases* : an official publication of the Infectious Diseases Society of America

45 (2): 149–57.

5. Klemperer MS, Hu LT, Evans J, et al. (July 2001). “Two controlled trials of antibiotic treatment in patients with persistent symptoms and a history of Lyme disease”. *N. Engl. J. Med.* 345 (2): 85–92.

6. Fallon BA, Keilp JG, Corbera KM, Petkova E, Britton CB, Dwyer E, Slavov I, Cheng J, Dobkin J, Nelson DR, Sackeim HA (March 2008). “A randomized, placebo-controlled trial of repeated IV antibiotic therapy for Lyme encephalopathy”. *Neurology* 70 (13): 992–1003.

7. Krupp LB, Hyman LG, Grimson R, et al. (24 June 2003). “Study and treatment of post Lyme disease (STOP-LD): a randomized double masked clinical trial”. *Neurology* 60 (12): 1923–30.

8. Feder HM, Johnson BJ, O’Connell S, et al. (October 2007). “A critical appraisal of “chronic Lyme disease””. *N. Engl. J. Med.* 357 (14): 1422–30.

9. Steere AC, Sikand VK, Schoen RT, Nowakowski J (2003). “Asymptomatic infection with *Borrelia burgdorferi*”. *Clin. Infect. Dis.* 37 (4): 528–532.

10. Fahrner H, Sauvain MJ, Zhioua E, Van Hoecke C, Gern LE (1998). “Longterm survey (7 years) in a population at risk